

WithWave's Directional Coupler offer frequency range from 4 to 8 GHz and low insertion loss & VSWR. This Coupler (BC4080-30-SF) have 30 dB coupling & 15 dB directivity characteristics.

■ Features

- Nominal Coupling : 30 ± 1 dB
- Directivity : 15 dB (Min.)
- SMA Connector (Female)



■ Specification

| Scope | Specification | BC4080-30-SF |
|----------------------------|-----------------------------|-----------------|
| Electrical | Impedance | 50 Ohm |
| | Freq. range | 4 to 8 GHz |
| | Nominal Coupling | 30 ± 1 dB |
| | Insertion Loss | 0.6 dB |
| | VSWR Primary | 1.30:1 (Max.) |
| | VSWR Secondary | 1.30:1 (Max.) |
| | Directivity | 15 dB (Min.) |
| | Average Power | 50 W |
| | Peak Power | 2 KW |
| Mechanical & Environmental | Input / Output Connector | SMA (Female) |
| | Weight | 49.5 g |
| | Material | Aluminum |
| | Finishing | Black paint |
| | Operating Temperature Range | -40°C to +85 °C |

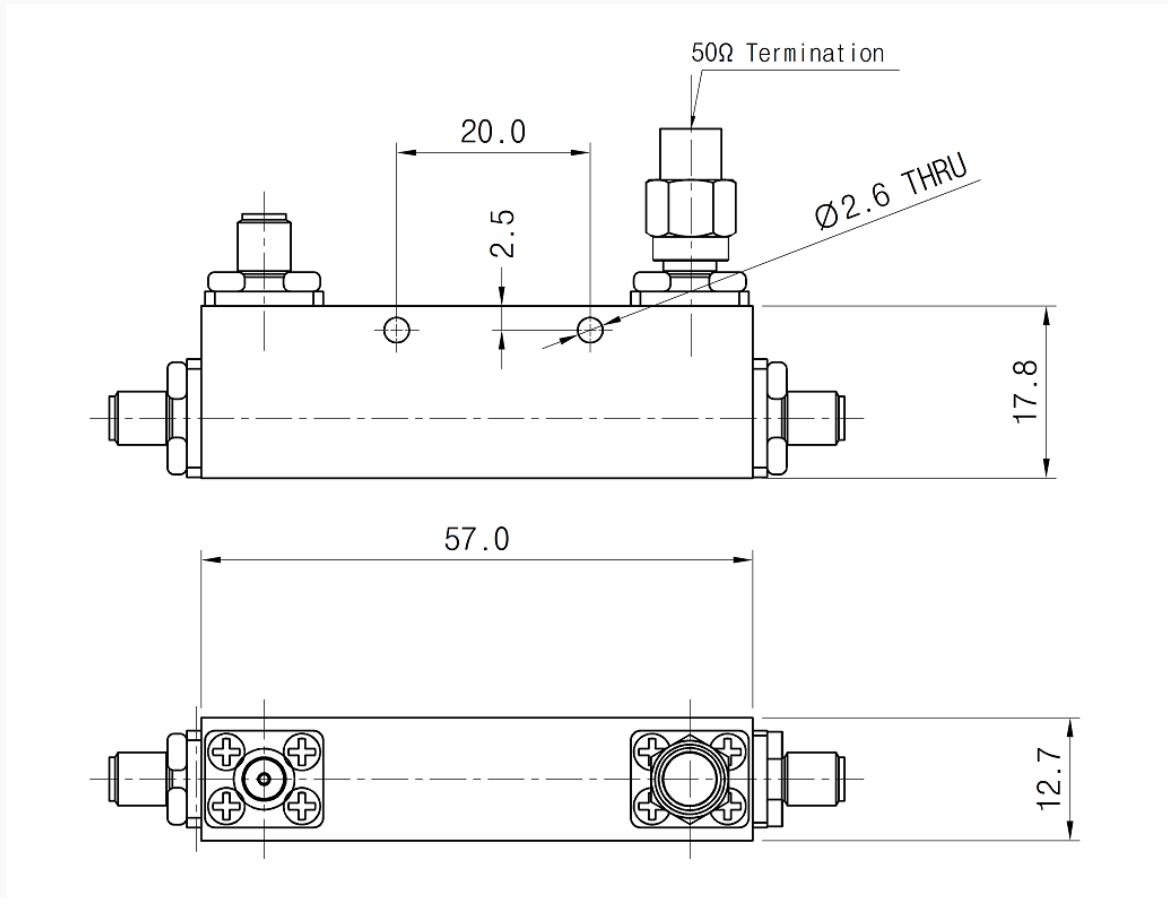
Directional Coupler

4 to 8 GHz
30 dB Coupling

withwave
Next Generation Connectivity

■ Drawing

Unit : mm
Outline Tolerances ± 0.5
Mounting Holes Tolerances ± 0.2

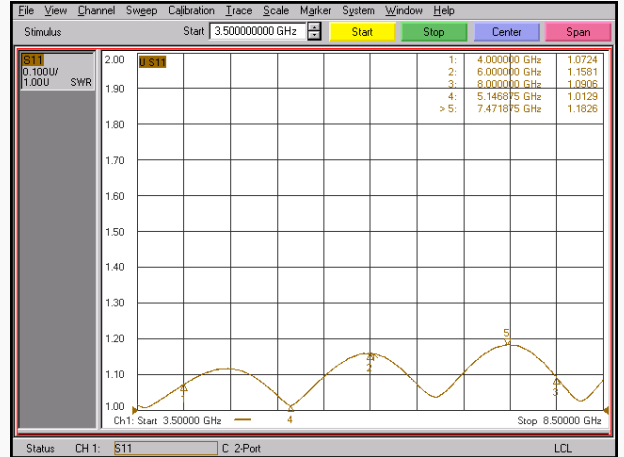


Measurement

Insertion Loss (S21)



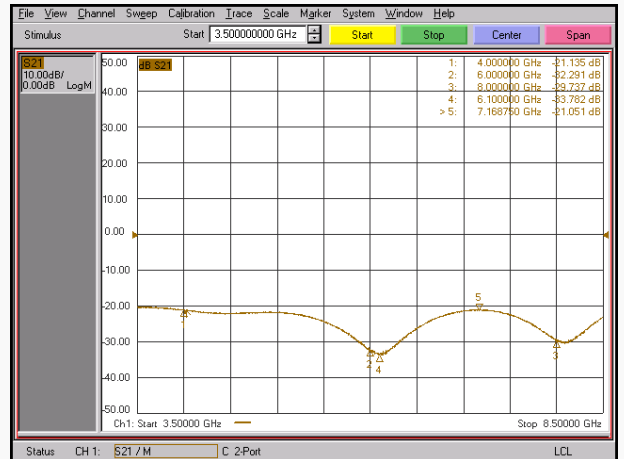
Primary VSWR



Secondary VSWR



Directivity



Nominal Coupling

