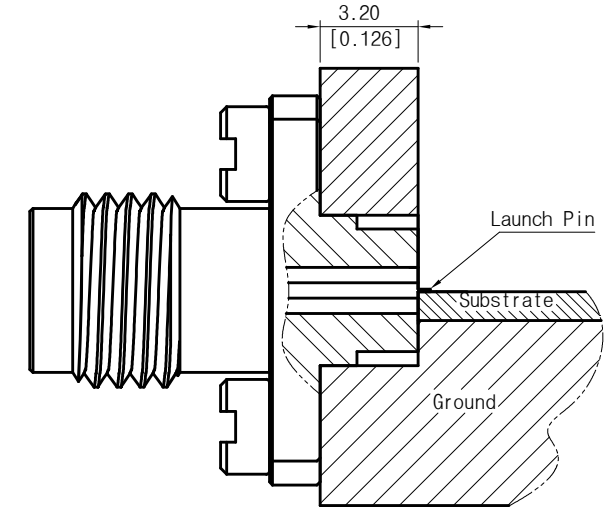
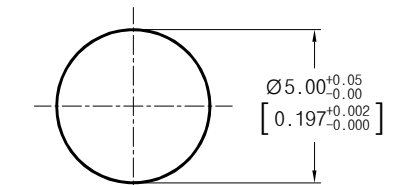


<Specification>

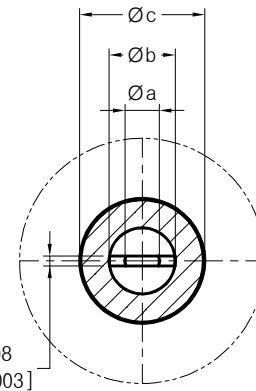
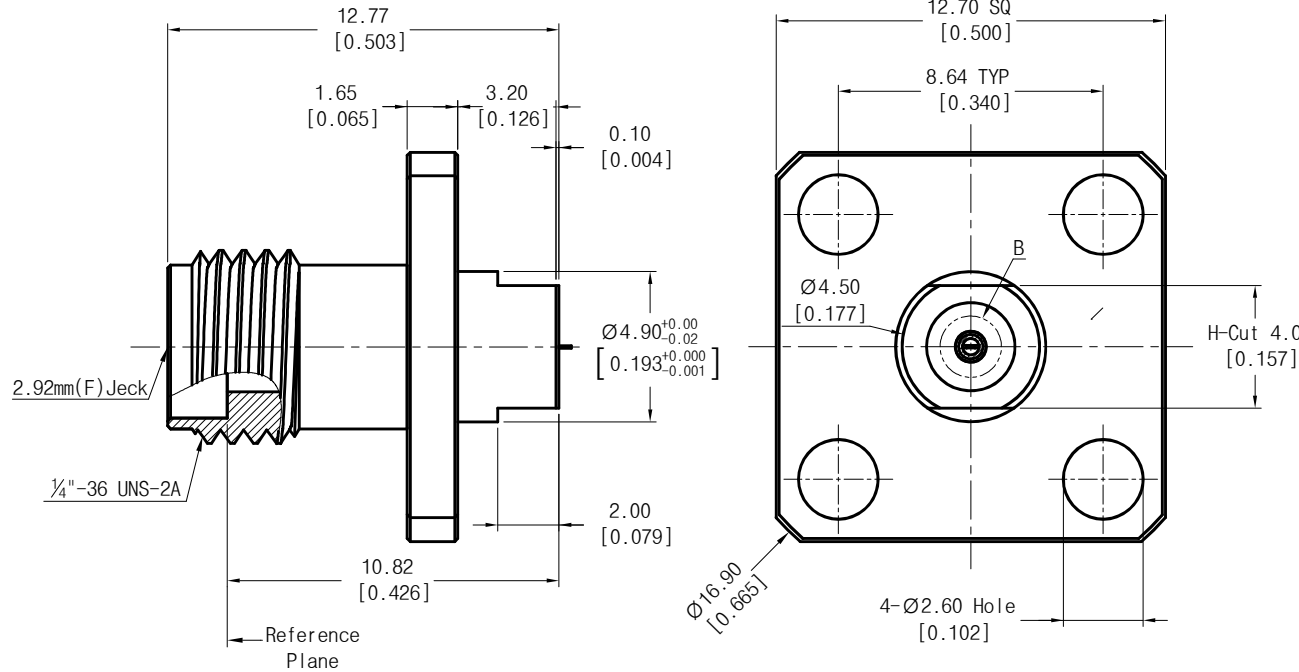
1. Material
 - 1) Body : Stainless Steel (Passivated)
 - 2) Center Conductor : BeCu (Au Plated)
 - 3) Insulator : PEI, PTFE
 - 4) HEX Socket Wrench Bolts : Stainless Steel (Passivated)
2. Electrical
 - 1) Impedance : 50Ω
 - 2) Frequency range : DC to 40GHz
 - 3) VSWR : 1.2 : 1
3. Mechanical
 - 1) Durability : 500 Cycles
4. Environmental
 - 1) Temp. Range : -40°C to +125°C
 - 2) RoHS Compliant



<Launch Pin to Substrate>



<Recommended Mount Hole>



<Detail B>

2.92mm(40GHz)

Type	PCB		Pin Diameter		Dielectric Dia.	Part No.
	Substrate Thick.	Pattern Width	ØA	ØB	ØC	
RO4003C	8.0	0.436	0.28	0.42	0.82	PM03FS001
	12.0	0.677	0.50	0.64	1.14	PM03FS002
RO4350B	10.0	0.545	0.38	0.54	1.00	PM03FS003
Du5880	5.0	0.366	0.28	0.34	0.70	PM03FS004
	10.0	0.765	0.40	0.72	1.24	PM03FS005

THE INFORMATION HEREON/HEREIN IS PROPRIETARY TO WITH-WAVE CO., LTD. IT SHALL NOT BE COUPIED, DISCLOSED OR USED(PARTIALLY OR WHOLLY) IN ANY MANNER WITHOUT PRIOR EXPRESSED WRITTEN AUTHORIZATION OF WITH-WAVE CO., LTD.

Tolerance	0	±0.1	±2.0°	Approved	2015. 12. 07	Title	2.92mm Female Wave Launch Panel Mount Connector
	0.X	±0.05	±1.0°	Checked			Part No.
	0.XX	±0.03		Drawn	Teri K		
Scale		Unit	mm				