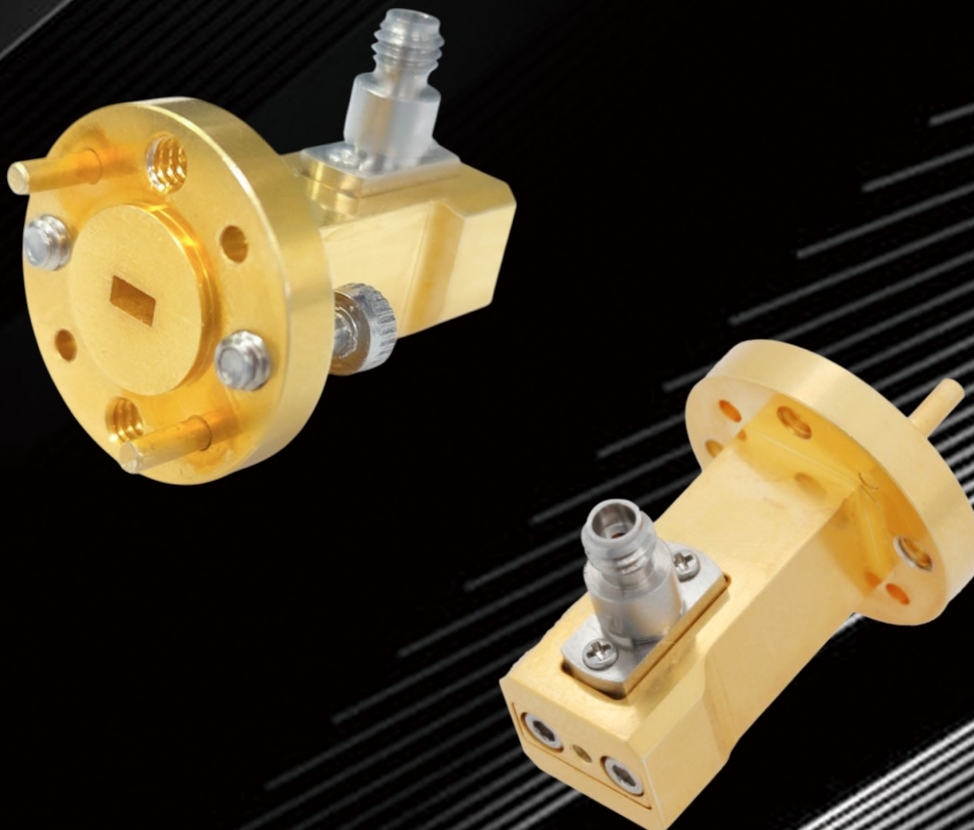


Waveguide to 1.0 mm Adapters (E- & W-Band)



Waveguide to 1.0mm Adapters

E-& W-Band

Withwave introduces **High performance mmWave Waveguide to 1.0 mm Coaxial Adapters** designed to make your high frequency testing and communication setups easier and more reliable. It offers a smooth and efficient transition between rectangular waveguides and 1.0 mm coaxial connectors, delivering excellent performance throughout the W-Band frequency range.

WR10 to 1.0 mm



WR12 to 1.0 mm



• Features

- Frequency Range : E-& W-band
- Waveguide Port : WR-10 & WR-12
- Lower insertion loss and return loss

• Application

- Satellite Communication
- Radio Astronomy
- Test and Measurement
- Instrumentations

Scope	Items	WGA-R10	WGA-R12
Electrical	Frequency range	75 ~ 110 GHz	60 ~ 90 GHz
	Return loss	< -15dB	< -15dB
	Insertion loss	> -1.5dB	> -1.0dB
Mechanical & Environmental	Waveguide Port	WR-10	WR-12
	Coax Type	1.0 mm connector	1.0 mm connector
	Dimensions	25(L) * 10(W) * 17.46(H) mm	25(L) * 10.6(W) * 17.41(H) mm
	Weight	8.7g	9.1g
	Operating temperature	-40 °C ~ 85 °C	-40 °C ~ 85 °C
Material	Housing	Aluminum with gold plate	Aluminum with gold plate