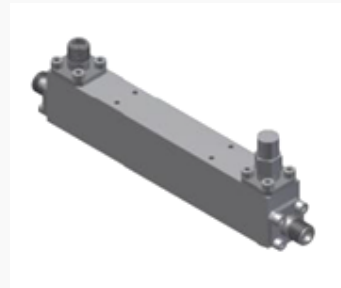


**Withwave's Directional Coupler** offer frequency range from 1.0 GHz to 20 GHz and low insertion loss & VSWR. This Coupler (BC10200-10-SF) have 10 dB coupling & 13 dB directivity characteristics.

### ■ Features

- Nominal Coupling :  $10 \pm 0.5$  dB
- Directivity : 15 dB (Min.)
- SMA Connector (Female)



### ■ Specification

Scope	Specification	BC10200-10-SF
Electrical	Impedance	50 Ohm
	Freq. range	1.0 to 20.0 GHz
	Insertion Loss	1.4 dB (Max)
	VSWR	1.50: 1
	Nominal Coupling	$10 \pm 0.5$ dB
	Directivity	15 dB (Min.)
	Freq. Flatness	$\pm 1.0$ dB (Max.)
	CW Power	20 W (Max.)
Mechanical	Peak Power	3 KW (Max.)
	Connector	SMA (Female)
	Weight	75 g

### ■ Drawing

Unit : mm

