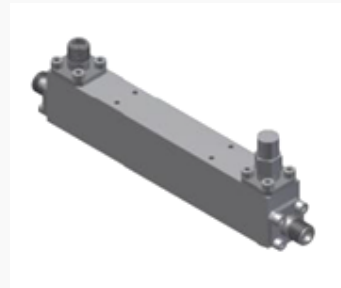


Withwave's Directional Coupler offer frequency range from 1.0 GHz to 20 GHz and low insertion loss & VSWR. This Coupler (BC10200-20-SF) have 30 dB coupling & 14 dB directivity characteristics.

■ Features

- Nominal Coupling : 30 ± 0.6 dB
- Directivity : 14 dB (Min.)
- SMA Connector (Female)



■ Specification

Scope	Specification	BC10200-30-SF
Electrical	Impedance	50 Ohm
	Freq. range	1.0 to 20.0 GHz
	Insertion Loss	0.8 dB (Max)
	VSWR	1.40: 1
	Nominal Coupling	30 ± 0.6 dB
	Directivity	14 dB (Min.)
	Freq. Flatness	± 0.8 dB (Max.)
	CW Power	20 W (Max.)
Mechanical	Peak Power	3 KW (Max.)
	Connector	SMA (Female)
	Weight	80 g

■ Drawing

Unit : mm

